

FITC-equivalent Human CD20 Protein-Nanodisc

Cat. No. CD2-HM1N37

Description

Source	Recombinant FITC-equivalent Human CD20 Protein-Nanodisc is expressed from HEK293 with His tag at the C-terminus. It contains Met1-Pro297.
Accession	P11836-1
Molecular Weight	The protein has a predicted MW of 34.3 kDa kDa.
Wavelength	Excitation Wavelength: 490 nm Emission Wavelength: 520 nm
Endotoxin	Less than 1EU per µg by the LAL method.

Formulation and Storage

Formulation	Supplied as 0.22 µm filtered solution in PBS (pH 7.4). Notice: Not recommended for immunization.
Storage	Valid for 12 months from date of receipt when stored at -80°C. Recommend to aliquot the protein into smaller quantities for optimal storage. Please minimize freeze-thaw cycles.

Background

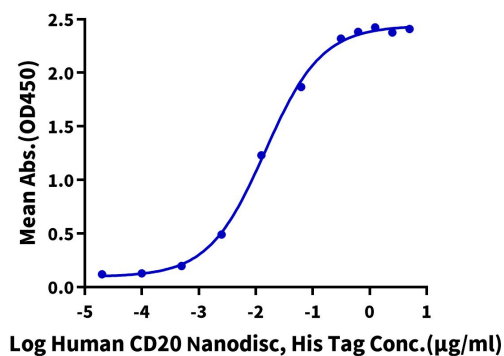
B-lymphocyte antigen CD20 or CD20 is an activated-glycosylated phosphoprotein expressed on the surface of all B-cells beginning at the pro-B phase (CD45R , CD117) and progressively increasing in concentration until maturity. CD20 is the target of the monoclonal antibodies rituximab, ocrelizumab, obinutuzumab, ofatumumab, ibritumomab tiuxetan, tositumomab, and ublituximab, which are all active agents in the treatment of all B cell lymphomas, leukemias, and B cell-mediated autoimmune diseases.

Assay Data

ELISA Data

Human CD20 Nanodisc, His Tag ELISA

0.2µg Rituximab, hFc Tag Per Well

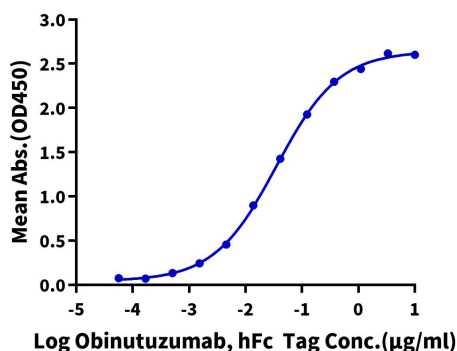


Immobilized Rituximab, hFc Tag at 2µg/ml (100µl/well) on the plate. Dose response curve for FITC-equivalent Human CD20 Nanodisc, His Tag with the EC50 of 14.6ng/ml determined by ELISA (QC Test).

ELISA Data

Human CD20 Nanodisc, His Tag ELISA

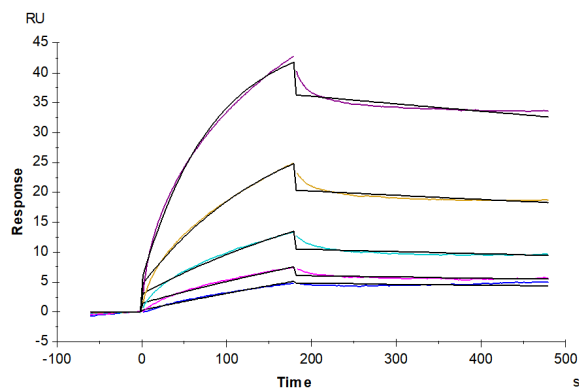
0.5µg Human CD20 Nanodisc, His Tag Per Well



Immobilized FITC-equivalent Human CD20 Nanodisc, His Tag at 5µg/ml (100µl/well) on the plate. Dose response curve for Obinutuzumab, hFc Tag with the EC50 of 35.3ng/ml determined by ELISA.

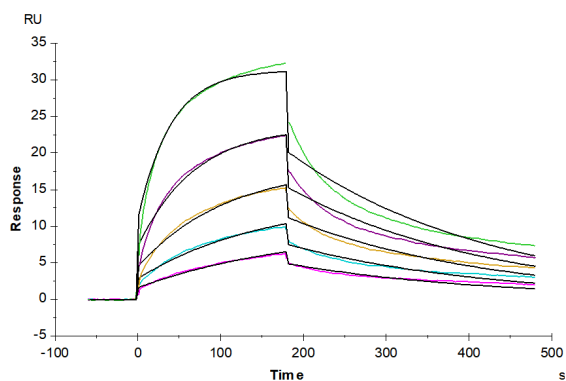
Assay Data

SPR Data



FITC-equivalent Human CD20 Nanodisc, His Tag captured on CM5 Chip via anti-his antibody can bind Rituximab, hFc Tag with an affinity constant of 3.09 nM as determined in SPR assay (Biacore T200).

SPR Data



FITC-equivalent Human CD20 Nanodisc, His Tag captured on CM5 Chip via anti-his antibody can bind Ofatumumab, hFc Tag with an affinity constant of 153.07 nM as determined in SPR assay (Biacore T200).